



Ø3 – 4mm

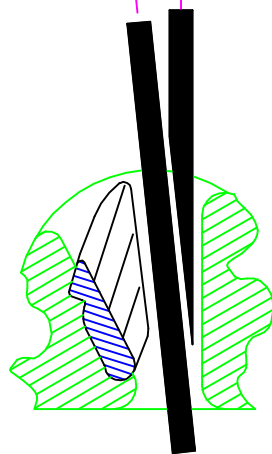
1/8" – 5/32"

Cleat
at this
angle.

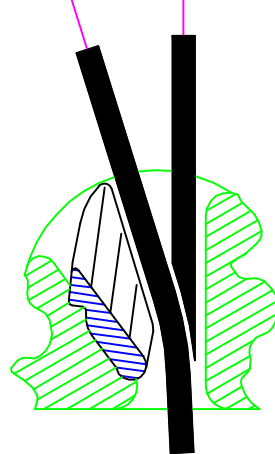
Adjust
at this
angle

Cleat
at this
angle.

Adjust
at this
angle



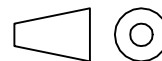
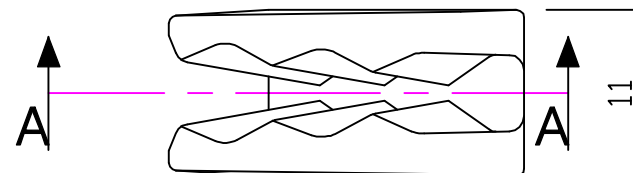
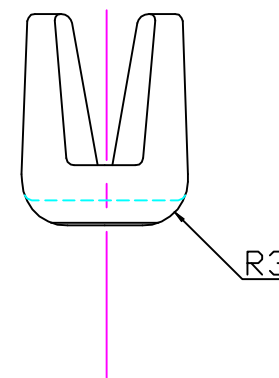
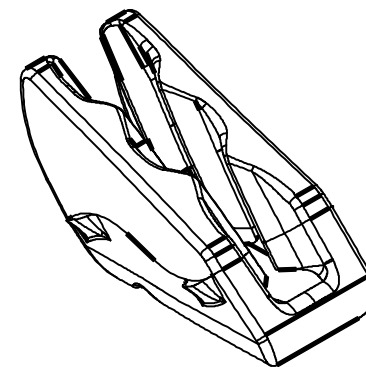
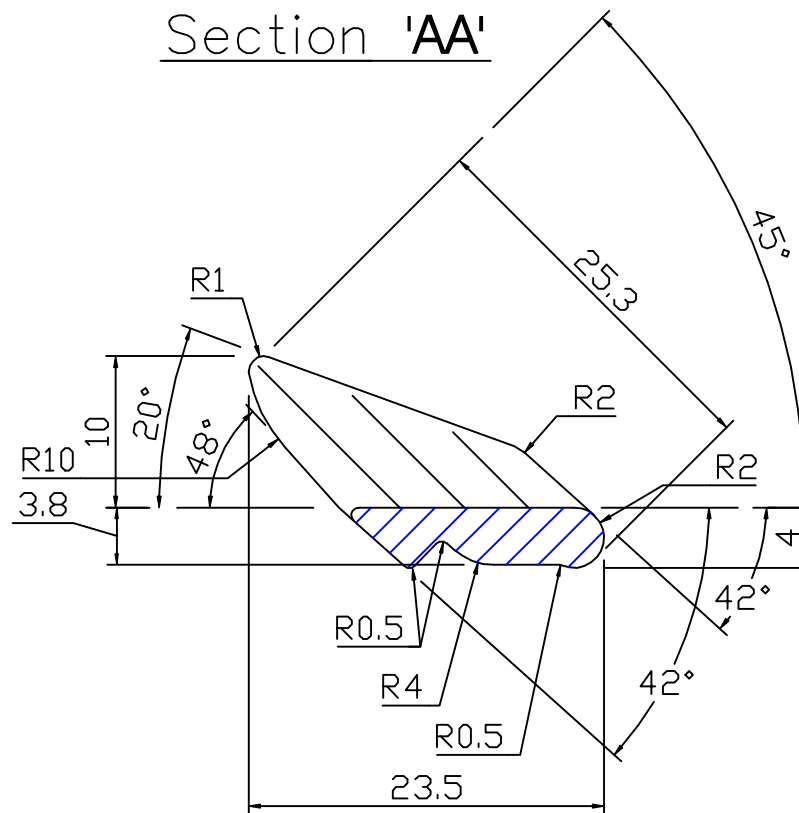
Quick cleating
arrangement



Rope stays clear
during tensioning

(Variations between these
arrangements would also work)

Section 'AA'



Scale 2:1

All dimensions in mm.

Issue: 2

May 2001

ID716.dwg

Material:

Diecast Aluminium

Installation Drawing for:–

CL716

Small Cleat Insert



Clamcleats Limited

Watchmead

Welwyn Garden City

Hertfordshire AL7 1AP

England

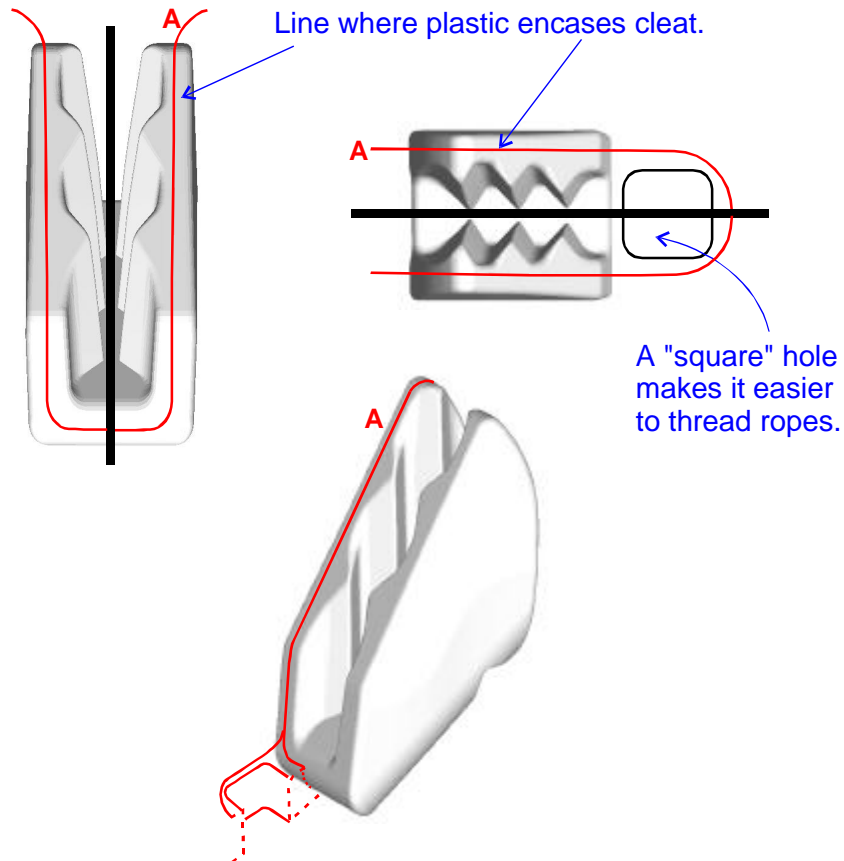
Telephone +44 (0)1707 330101

Fax +44 (0)1707 321269

<http://www.clamcleat-rope-cleats.com>

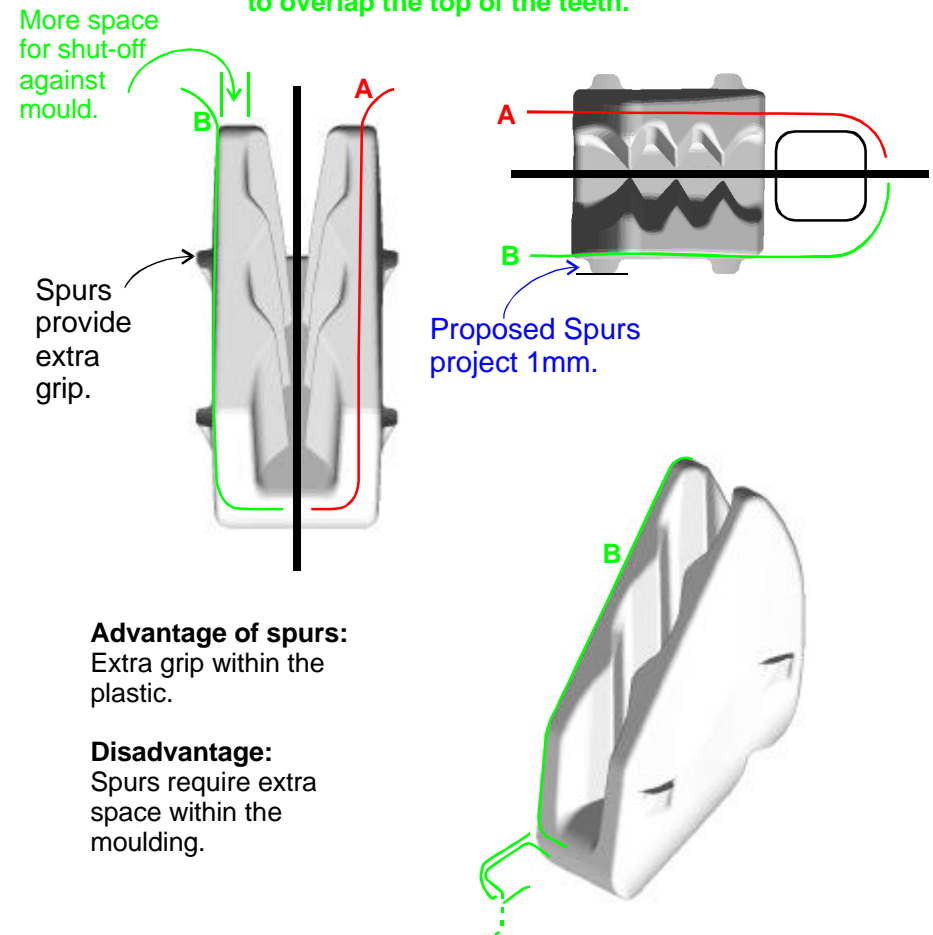
Pocket design guidelines. CL716 without spurs.

A. The sides of the CL716 are wide enough for the over-moulded plastic to grip the cleat very well.



Pocket design guidelines. CL716 with proposed spurs.

B. Spurs mean that the moulding does not have to overlap the top of the teeth.

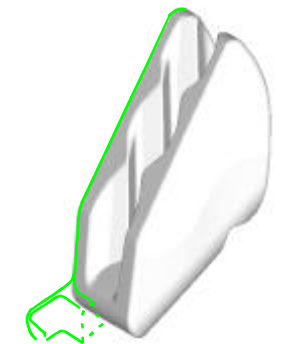
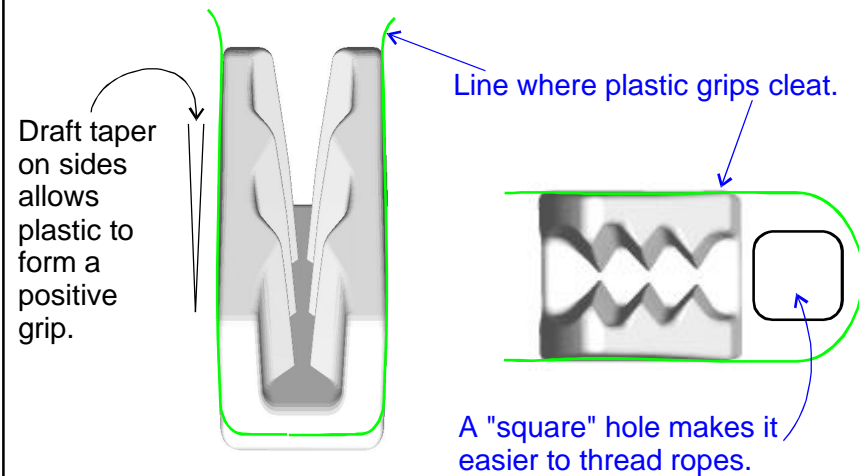


For 3D computer modelling, IGES files of the outside shapes are available.
Please ask for CL716os.igs and CL716oss.igs (with spurs).

ID716 page 2
Issue 1. May 2001
©Clamcleats Ltd 2001

Pocket design guidelines. CL716 without spurs.

The tapered sides of the CL716 allow good grip as the plastic shrinks onto the cleat after it has been pressed in.



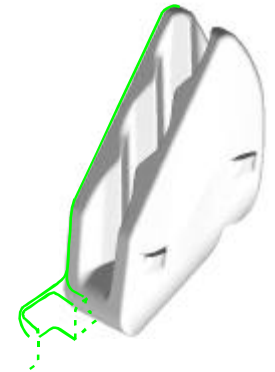
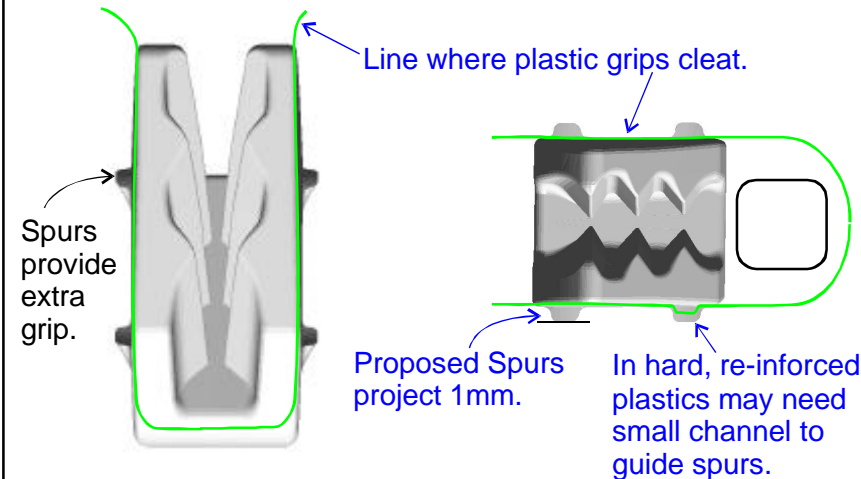
Press cleat into moulding in this direction.
(This is best done when the moulding is hot, straight off the injection moulding machine).

Pocket design guidelines. CL716 with proposed spurs.

Advantage of spurs:
Extra grip within the plastic.

Disadvantage:
Spurs require extra space within the moulding.

Note:
May require a small undercut within moulding to accommodate spurs, once inserted.
Or, cleat can be heated before insertion.
Or, cleat can be inserted using ultrasonics.



For 3D computer modelling, IGES files of the outside shapes are available.
Please ask for CL716os.igs and CL716oss.igs (with spurs).

ID716 page 3
Issue 1. May 2001
©Clamcleats Ltd 2001