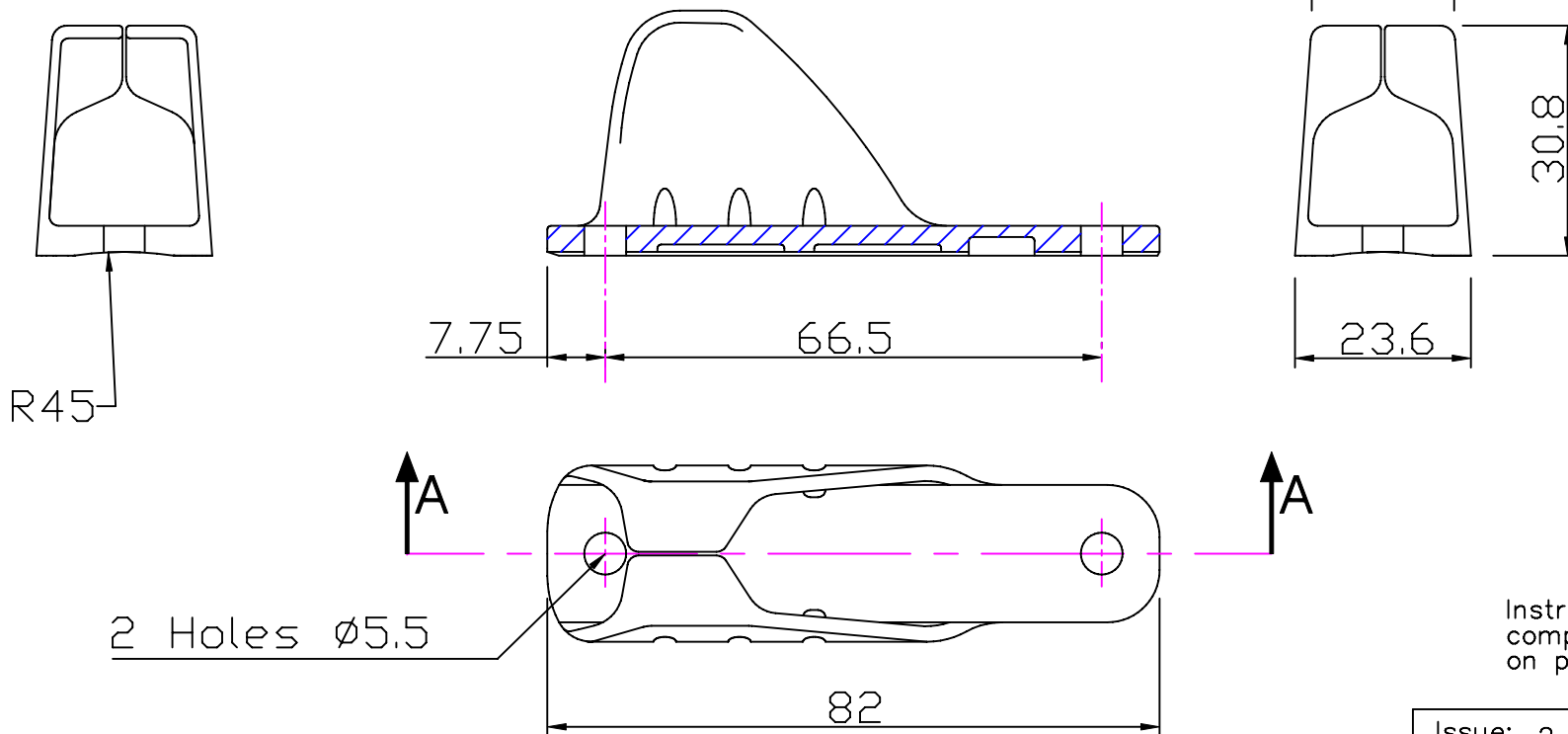


Section 'AA'



Instructions and
compatible cleats
on page 2

Issue: 2 May 2006
Page1 of 2 ID814.dwg

Material:
Acetal

Installation Drawing for: -
CL814

Keeper for CL203, CL211mk1,
CL211mk1AN, CL217mk1,
CL218mk1, CL236, CL236AN



Clamcleats Limited
Watchmead
Welwyn Garden City
Hertfordshire AL7 1AP
England

Telephone +44 (0)1707 330101
Fax +44 (0)1707 321269
<http://www.clamcleat.com>



Scale 1:1
All dimensions in mm.

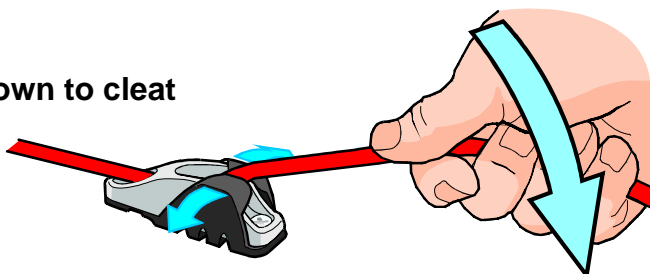
Rope runs free

Keeper is closed to stop rope going into cleat teeth.



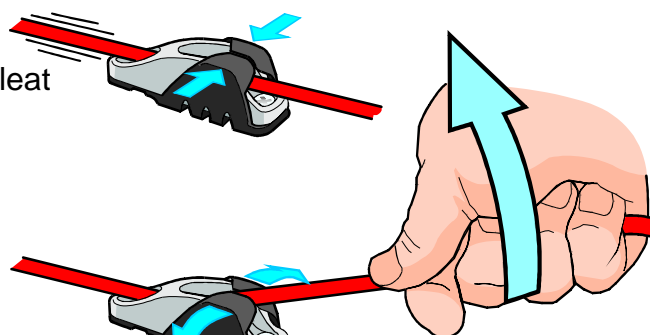
Pull rope back and down to cleat

Keeper opens to allow rope into teeth



Rope gripped

Keeper holds rope in cleat

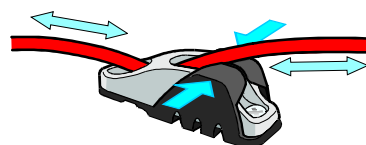


Lift up to release

Keeper opens to allow rope out of teeth



Rope runs free again



CL814 Keeper can be used with a variety of cleats and other accessories.



Cleat	Cleat + CL814	Cleat + CL814 + CL818	Cleat + CL814 + CL816	Cleat + CL814 + CL816 + CL818
CL203	✓	✓	✓	✓
CL203W/S1	✓	✓	✓	✓
CL211 Mk1	✓	✓	✓	✓
CL211 Mk1AN	✓	✓	✓	✓
CL217 Mk1	✓	✓		
CL217 Mk1AN	✓	✓		
CL218 Mk1	✓	✓		
CL218 Mk1AN	✓	✓		
CL236	✓	✓	✓	✓
CL236AN	✓	✓	✓	✓



Clamcleats Limited
Watchmead
Welwyn Garden City
Hertfordshire AL7 1AP
England

Telephone +44 (0)1707 330101
Fax +44 (0)1707 321269
www.clamcleat.com

ID814
page 2 of 2

Issue 3
Aug 2008

Installation Drawing for:-

CL814

Keeper for CL203
& Mk1 Racing Juniors