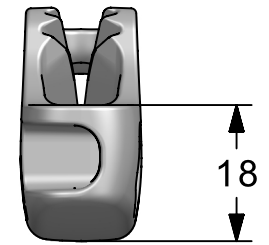
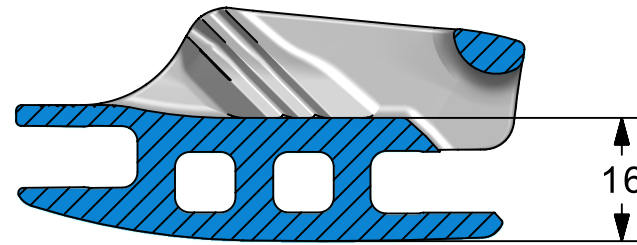
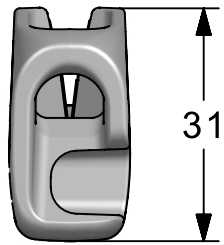
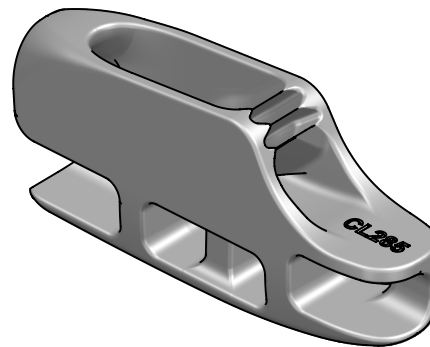
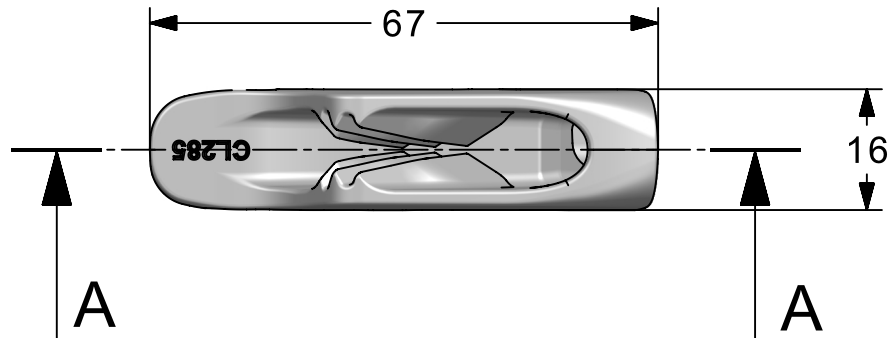
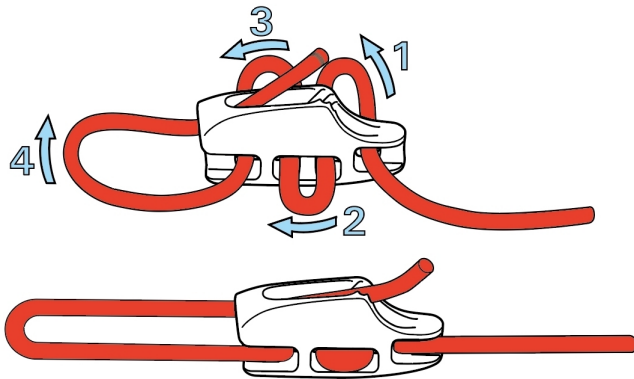




Ø 4-6mm
5/32"-1/4"



SECTION A-A



Scale- 1:1
All dimensions in mm.

Issue: 1
Apr 2025
ID285-1.dwg

Material:
Diecast Aluminium

Installation Drawing for:-

CL285

All-Alloy Aero Cleat



Clamcleats Limited
Watchmead
Welwyn Garden City
Hertfordshire AL7 1AP
England

Telephone +44 (0)1707 330101

www.clamcleat.com